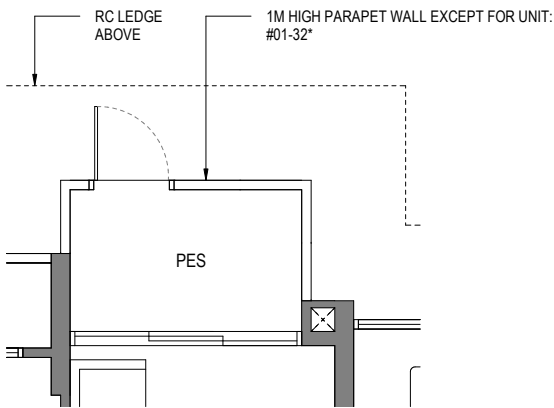


# 2 BEDROOM

## TYPE B1-G

49 sq m/ 527 sq ft  
INCLUSIVE OF 4 SQM PES

BLOCK	UNIT
813	#01-09 #01-16*
815	#01-17 #01-24*
817	#01-32*



APPLICABLE TO TYPE B1-G

## TYPE B1

49 sq m/ 527 sq ft  
INCLUSIVE OF 4 SQM BALCONY

BLOCK	UNIT
813	#02-09 TO #08-09 #11-09 TO #15-09 #18-09 TO #25-09 #02-16* TO #25-16*
815	#02-17 TO #12-17 #15-17 TO #19-17 #22-17 TO #25-17 #02-24* TO #25-24*
817	#02-32* TO #25-32*

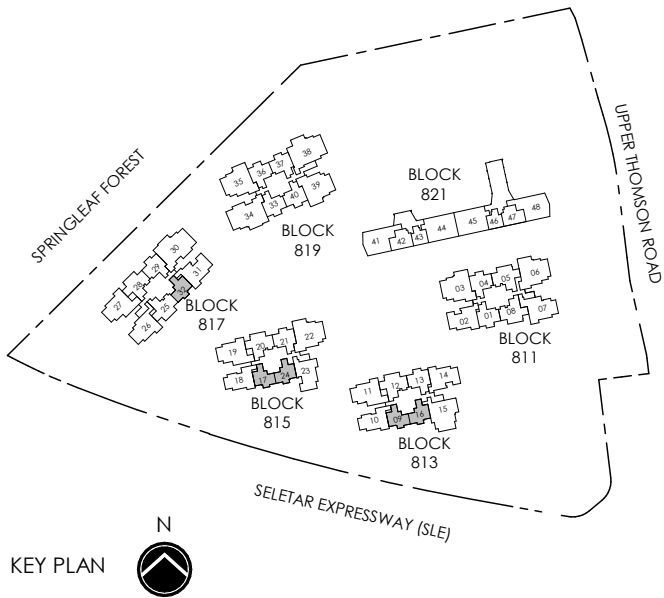


\* MIRROR IMAGE



LEGEND (where applicable) :

F - Fridge	WD - Washer Dryer
P - Pantry	DB - Distribution Board
O - Oven	ST - Store
IH - Induction Hob	



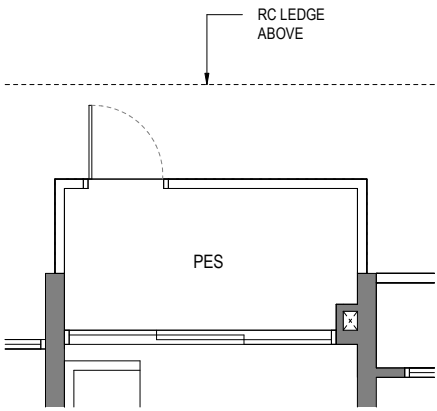
All plans are subjected to amendments as may be approved by the relevant authorities. Floor areas are approximate measurements and are subjected to final survey.  
Building Plan CX ES No.: ES20250314-50002-CG01  
Project Reference No.: A1709-A0050-2024  
Dated: 18 July 2025

# 2 BEDROOM

## TYPE B2-G

60 sq m/ 646 sq ft  
INCLUSIVE OF 5 SQM PES

BLOCK	UNIT
811	#01-01
813	#01-13
815	#01-21
817	#01-29
819	#01-33
	#01-36*
	#01-37
	#01-40*



APPLICABLE TO TYPE B2-G

## TYPE B2

60 sq m/ 646 sq ft  
INCLUSIVE OF 5 SQM BALCONY

BLOCK	UNIT
811	#02-01 TO #25-01
	#03-04* TO #25-04*
813	#02-13 TO #25-13
815	#02-21 TO #25-21
817	#02-29 TO #25-29
819	#02-33 TO #25-33
	#02-36* TO #25-36*
	#02-37 TO #08-37
	#11-37 TO #15-37
	#18-37 TO #25-37
	#02-40* TO #08-40*
	#11-40* TO #15-40*
	#18-40* TO #25-40*

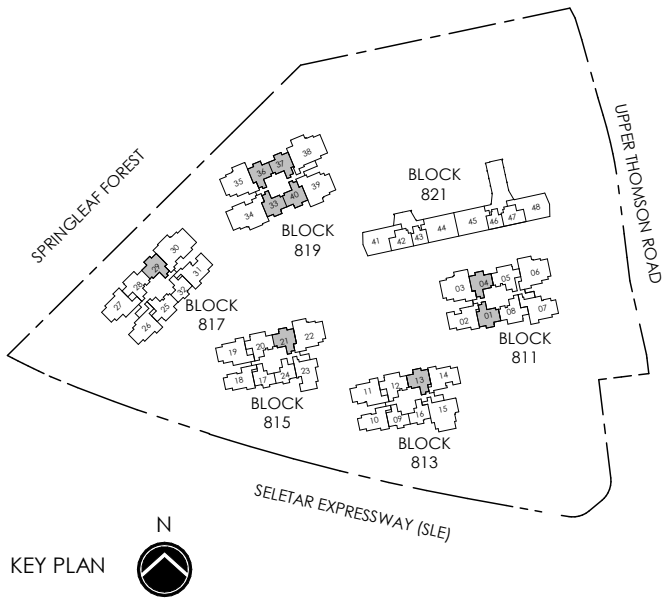


\* MIRROR IMAGE

0 1 3 5m

LEGEND (where applicable) :

F - Fridge	WD - Washer Dryer
P - Pantry	DB - Distribution Board
O - Oven	ST - Store
IH - Induction Hob	



All plans are subjected to amendments as may be approved by the relevant authorities. Floor areas are approximate measurements and are subjected to final survey.  
Building Plan CX ES No.: ES20250314-50002-CG01  
Project Reference No.: A1709-A0050-2024  
Dated: 18 July 2025

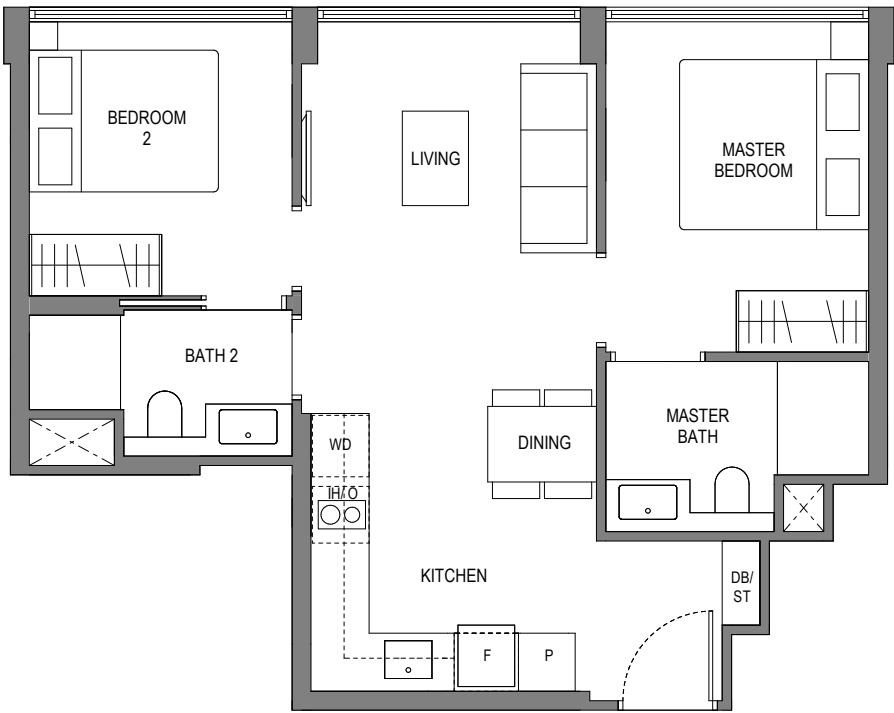
# 2 BEDROOM

## TYPE BC1

55 sq m/ 592 sq ft

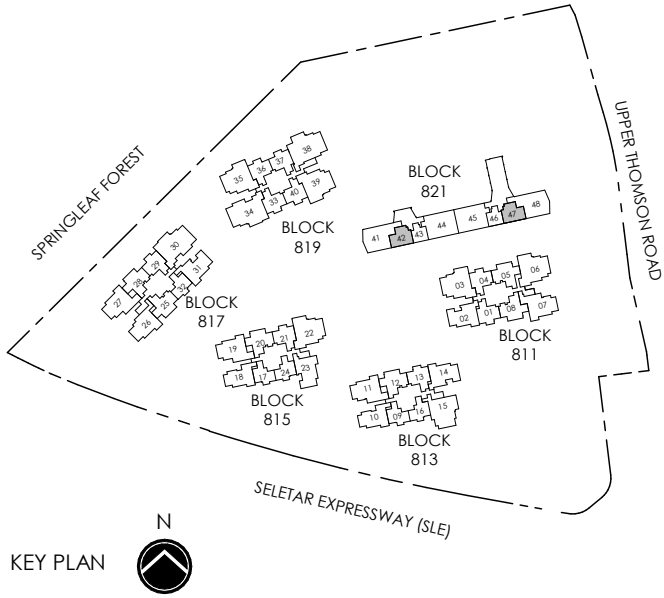
BLOCK	UNIT
821	#01-42* TO #04-42* #01-47 TO #04-47

\* MIRROR IMAGE



### LEGEND (where applicable) :

F - Fridge	WD - Washer Dryer
P - Pantry	DB - Distribution Board
O - Oven	ST - Store
IH - Induction Hob	



All plans are subjected to amendments as may be approved by the relevant authorities. Floor areas are approximate measurements and are subjected to final survey.  
Building Plan CX ES No.: ES20250314-50002-CG01  
Project Reference No.: A1709-A0050-2024  
Dated: 18 July 2025