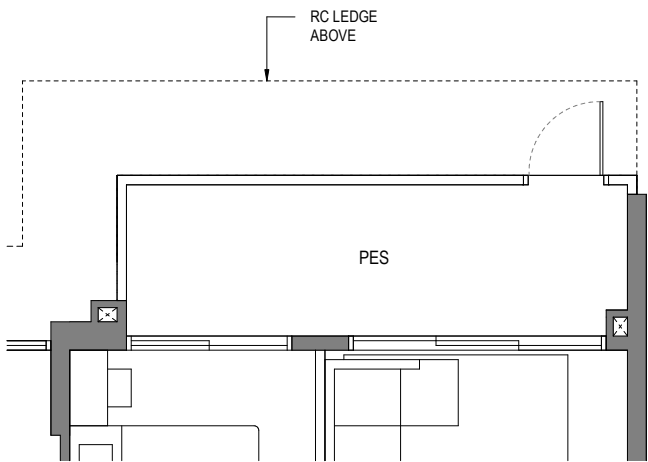


# 4 BEDROOM

## TYPE D1-G

114 sq m/ 1227 sq ft  
INCLUSIVE OF 9 SQM PES

BLOCK	UNIT
815	#01-22*
819	#01-35 #01-39



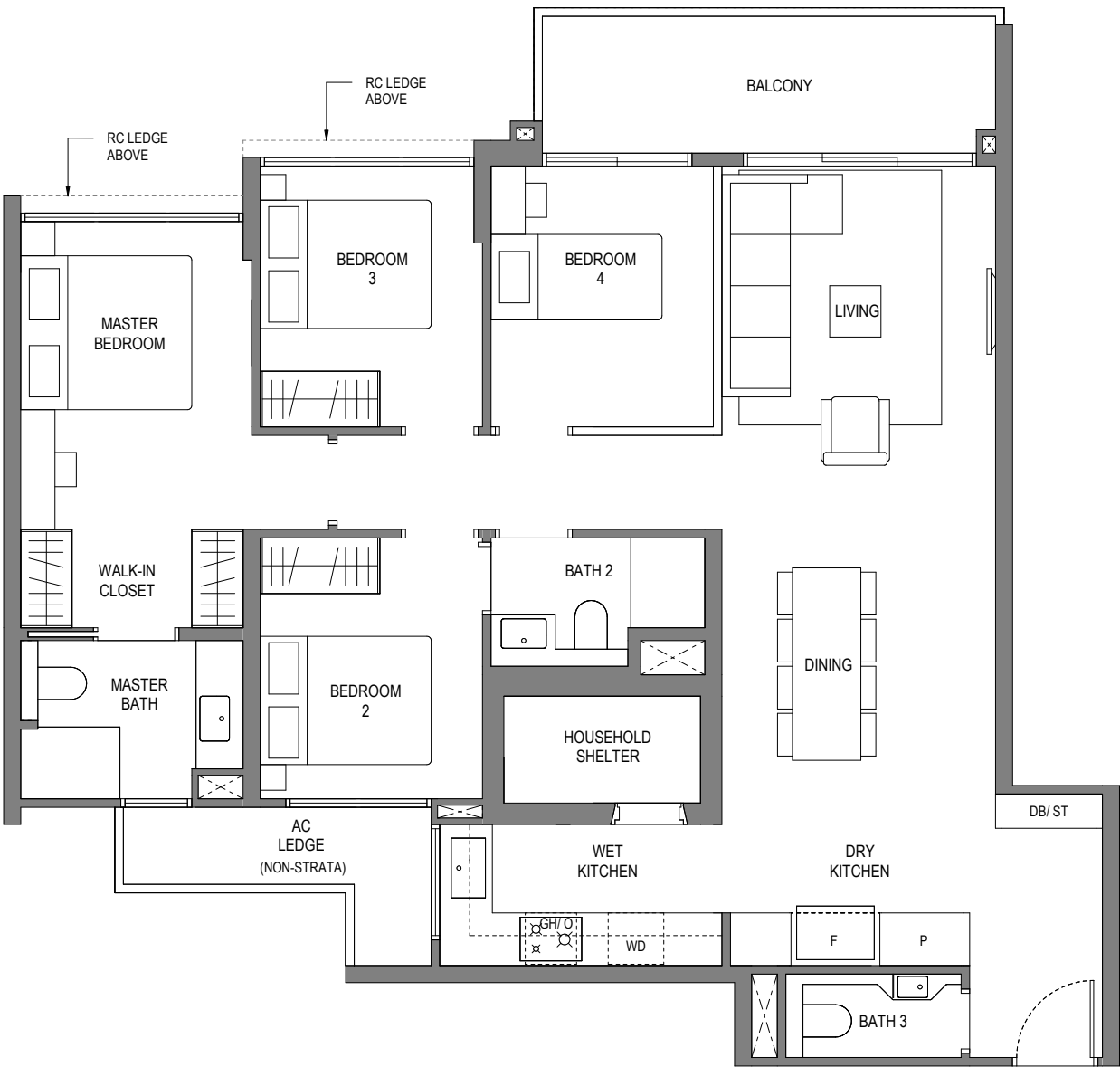
APPLICABLE TO TYPE D1-G

## TYPE D1

114 sq m/ 1227 sq ft  
INCLUSIVE OF 9 SQM BALCONY

BLOCK	UNIT
811	#03-03 TO #25-03 #03-06* TO #08-06* #11-06* TO #15-06* #18-06* TO #25-06*
815	#02-22* TO #25-22*
819	#02-35 TO #25-35 #02-39 TO #08-39 #11-39 TO #15-39 #18-39 TO #25-39

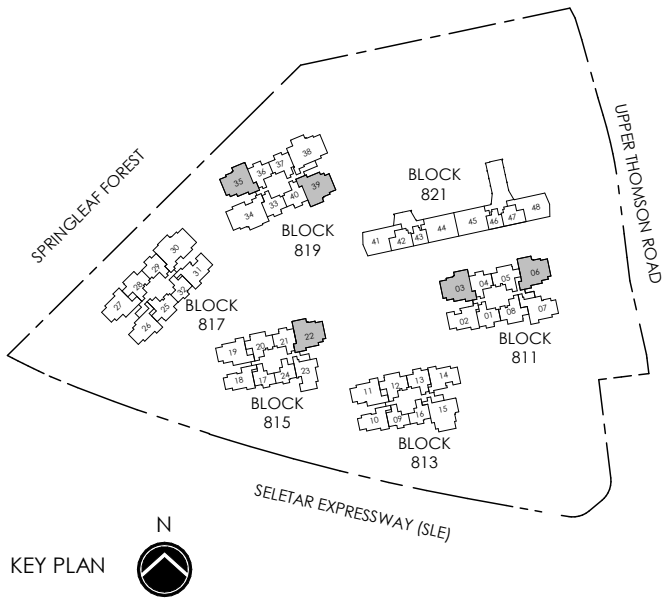
\* MIRROR IMAGE



0 1 3 5m

LEGEND (where applicable) :

F - Fridge	WD - Washer Dryer
P - Pantry	DB - Distribution Board
O - Oven	ST - Store
GH - Gas Hob	



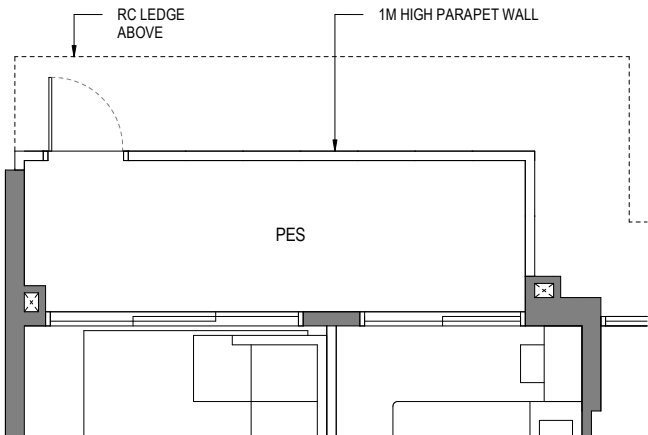
All plans are subjected to amendments as may be approved by the relevant authorities. Floor areas are approximate measurements and are subjected to final survey.  
Building Plan CX ES No.: ES20250314-50002-CG01  
Project Reference No.: A1709-A0050-2024  
Dated: 18 July 2025

# 4 BEDROOM

## TYPE D2-G

114 sq m/ 1227 sq ft  
INCLUSIVE OF 9 SQM PES

BLOCK UNIT  
813 #01-15

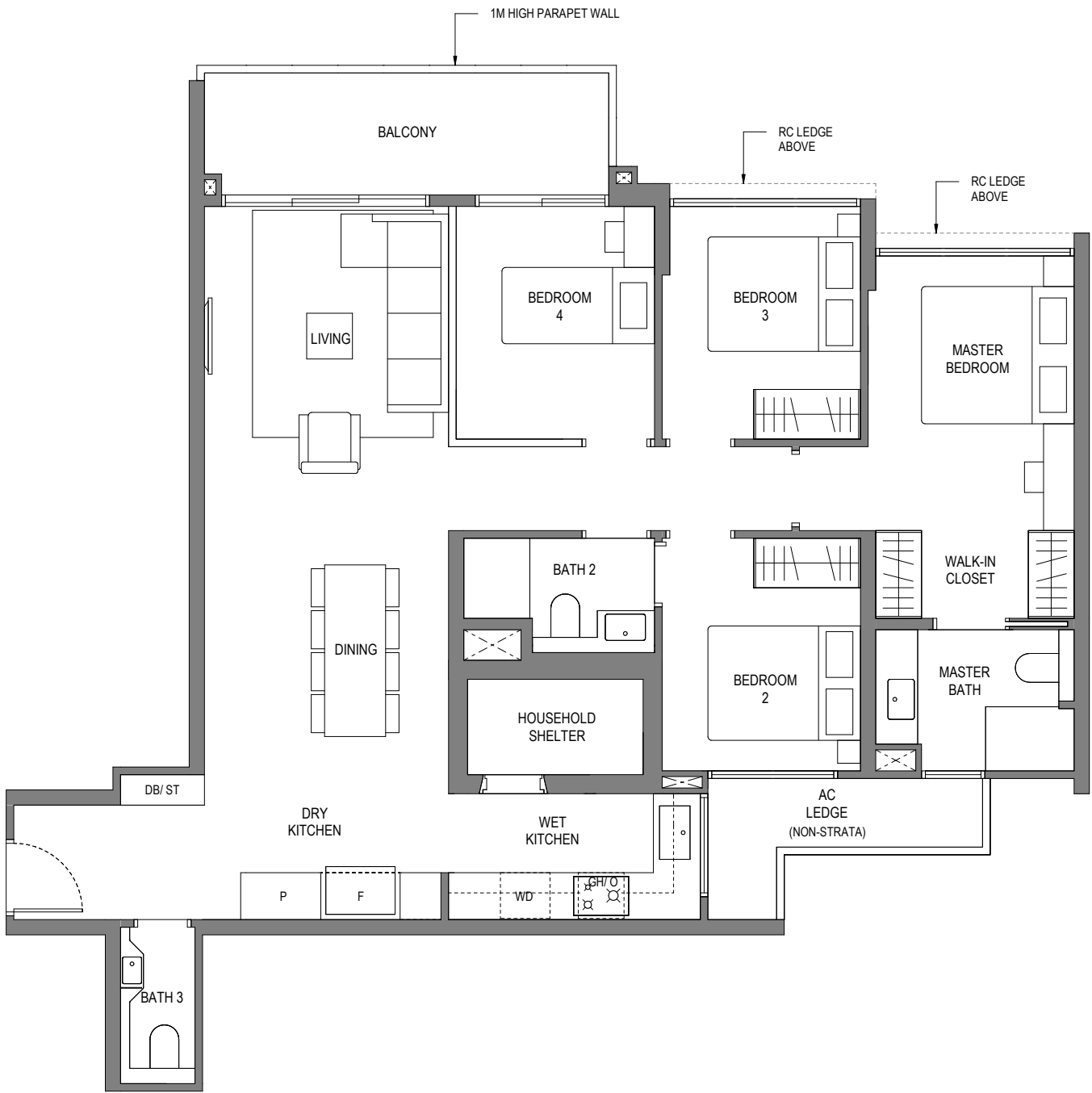


APPLICABLE TO TYPE D2-G

## TYPE D2

114 sq m/ 1227 sq ft  
INCLUSIVE OF 9 SQM BALCONY

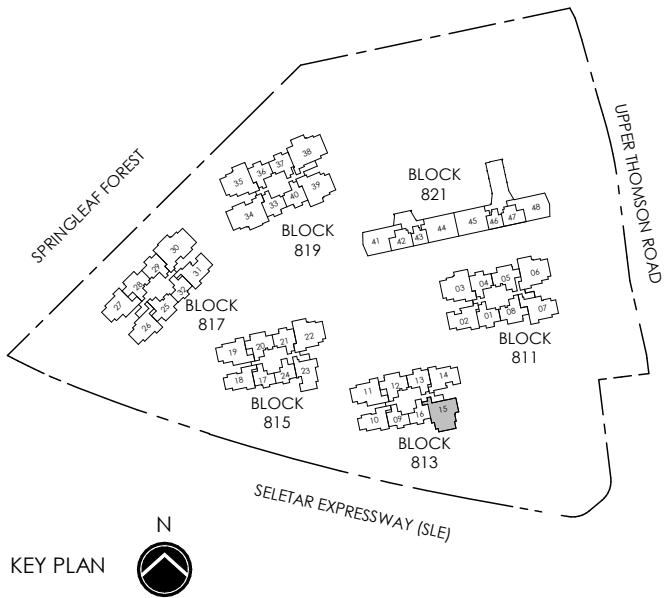
BLOCK UNIT  
813 #02-15 TO #25-15



0 1 3 5m

### LEGEND (where applicable) :

- |              |                         |
|--------------|-------------------------|
| F - Fridge   | WD - Washer Dryer       |
| P - Pantry   | DB - Distribution Board |
| O - Oven     | ST - Store              |
| GH - Gas Hob |                         |



All plans are subjected to amendments as may be approved by the relevant authorities. Floor areas are approximate measurements and are subjected to final survey.  
Building Plan CX ES No.: ES20250314-50002-CG01  
Project Reference No.: A1709-A0050-2024  
Dated: 18 July 2025